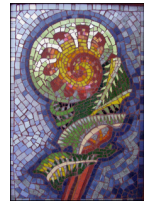


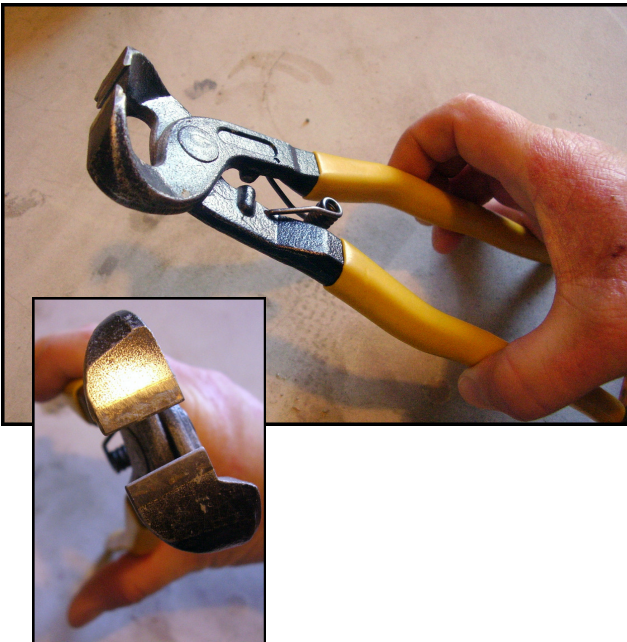
Mosaic Nippers and Cutting Techniques - Basic

FRACTURED ART MOSAICS
Sheryl Crowley



2-Wheeled Nippers

These nippers are for glass tile such as vitreous glass or for 1 inch or smaller ceramic tiles. These are also used for cutting china pieces. The nippers come with an allen key to rotate the wheels as the edges in contact with the tiles become dull.

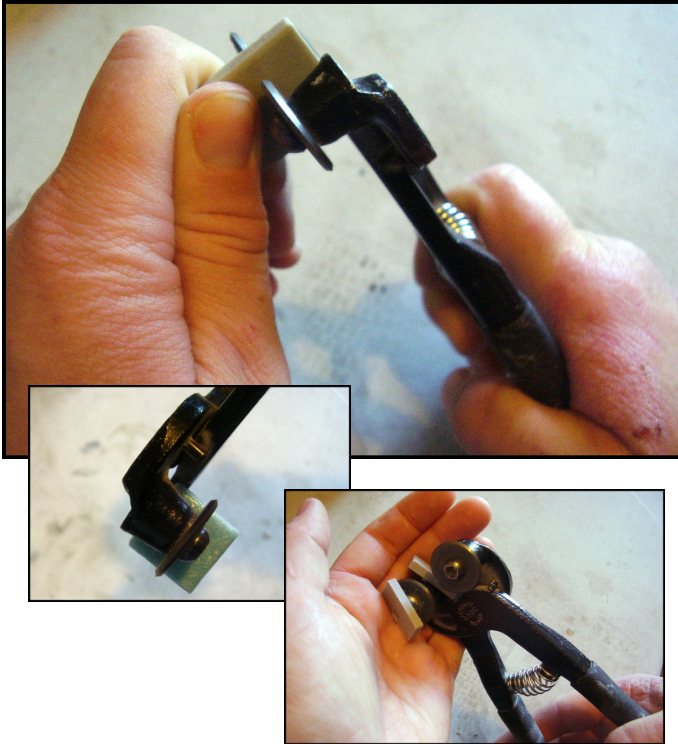
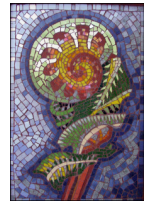


Side-Biter Nippers

These nippers are used for nipping larger ceramic tiles such as wall tile. The cutting edges are straight and they are used both to crack across a larger piece of tile or to nibble off edges to form desired shapes.

Mosaic Nippers and Cutting Techniques - Basic

FRACTURED ART MOSAICS
Sheryl Crowley



2-Wheeled Nippers-Cut Technique

To cut across a tile place the nippers in the **centre** of where the cut will run. Firmly hold the tile. The wheels need to be square to the tile, not on a slant. Squeeze the wheels together firmly and quickly. It is similar to the way you would cut wire with pliers—short and sharp squeeze. The tile will split.

To end up with a 1/4 tile rectangle or square, cut the full tile in the 1/2 first and then that section in half again.



Side-Biter Nippers-Cut Technique

Side-biters work by squeezing the tile from the **edge** and letting the split run across the rest of the piece. Hold the tile firmly and only clamp the nipper onto a small portion of the tile edge. Again, squeeze firmly and decisively to make the break. It will take varying amounts of strength depending upon the thickness and density of the tile. Holding the nipper handles nearer the ends will give more strength to your cut.

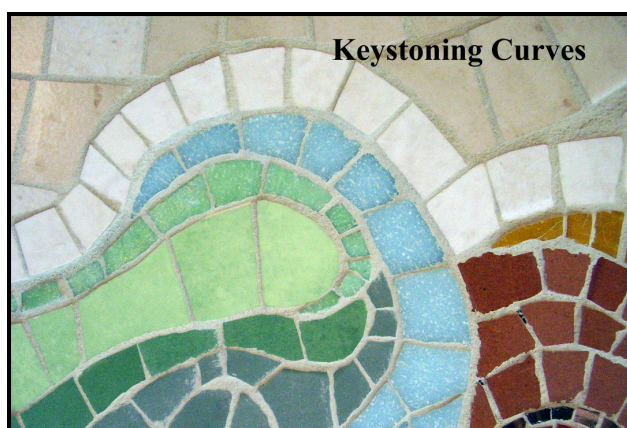
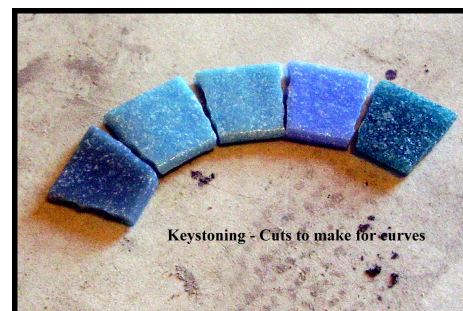
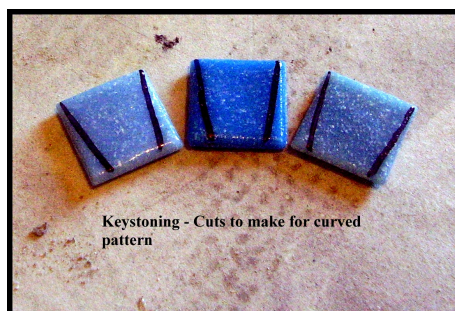
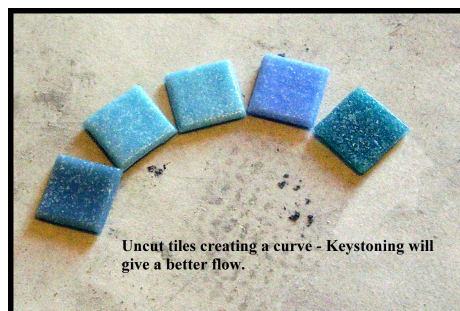
Mosaic Nippers and Cutting Techniques - Keystoning

FRACTURED ART MOSAICS
Sheryl Crowley



Keystoning For Curves

Keystoning is a way of cutting tiles to create a flow around curved areas of a design. It allows the design to move in a clear rhythm and gives overall cohesion to the lines of tile within a shape or outlining a shape. Think of ancient Roman bridges arching over waterways and that is the way you are aiming to cut the tile sections.



Sheryl Crowley

1 Alexandra St., Saint John, N.B. E2k 1A9

Phone (506) 693-8262

fracturedartmosaics@yahoo.ca

www.fracturedartmosaics.com